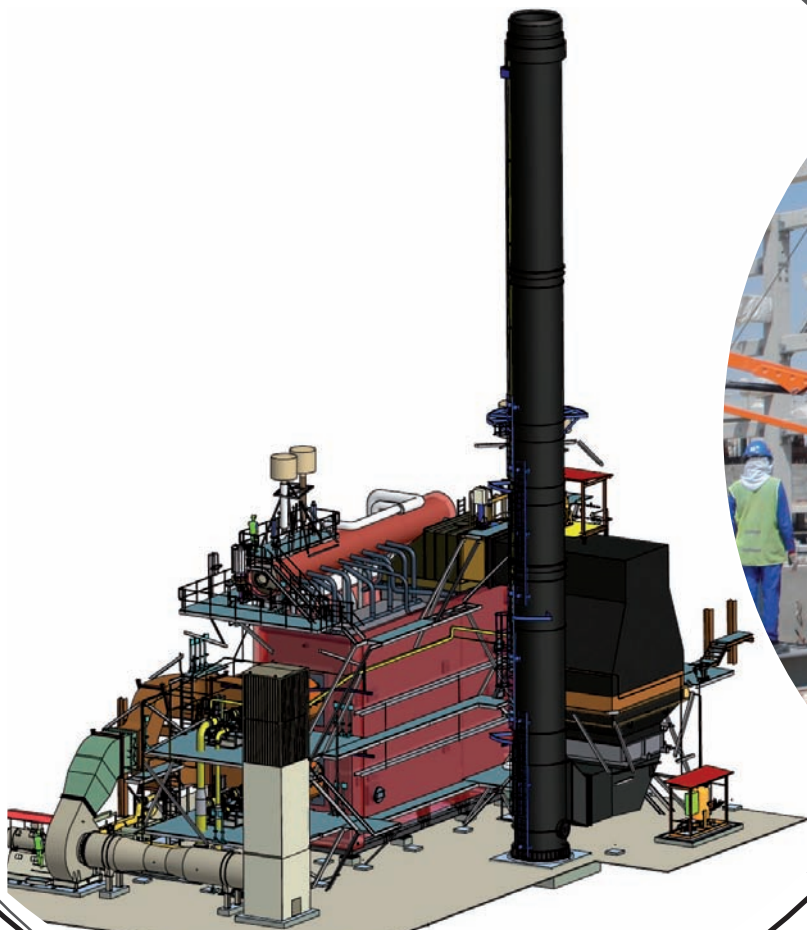


SteamGen™ 4

– Qatar Shell GTL - Pearl GTL



In December 2006 Aalborg Engineering signed a contract with Qatar Shell GTL Limited in Doha Qatar to supply two HP auxiliary steam boilers for the onshore gas to liquids complex for the Pearl GTL project at Ras Laffan City in Qatar.

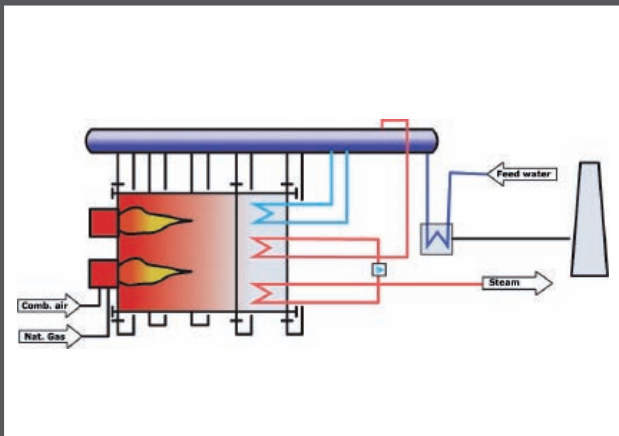


Aalborg Engineering
understanding energy

SteamGen™ 4 • Qatar Shell GTL - Pearl GTL

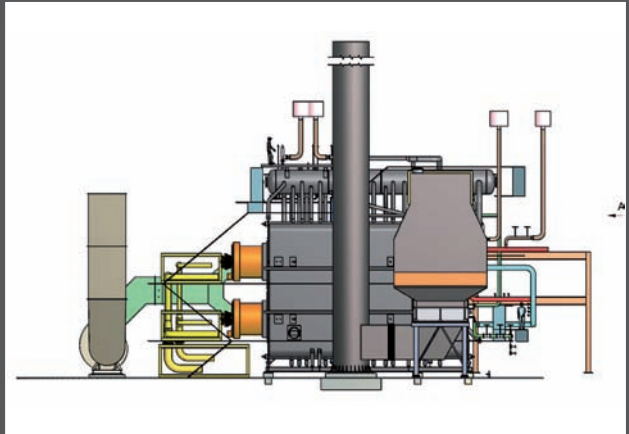
Two auxiliary steam boilers for the onshore gas to liquids complex for the Pearl GTL project.

The boilers have been designed to operate on natural gas and refinery gas.



Project Data

Client:	Qatar Shell GTL Limited
Location:	Ras Laffan City, State of Qatar
Year of commissioning:	2009
Boiler:	SteamGen™ 4
Fuel:	Natural gas and refinery gas
Steam capacity:	160 t/h (Peak load: 176 t/h)
Operating pressure:	66 bar
Steam temperature:	420 °C



Scope of Supply

- Boiler
- Steel structure, platforms and stairways
- Steam system
- Drain, vent and blowdown system
- Gas burners and fuel gas skids
- Flue gas ducts and stack
- Water & steam sampling system
- Valves and instrumentation
- FD Fan, silencer and sand filter
- Ammonia vaporisation skid
- Ammonia injection skid
- Selective catalytic reduction unit (DeNOx)
- Supervision of erection and construction.



Aalborg Engineering
understanding energy